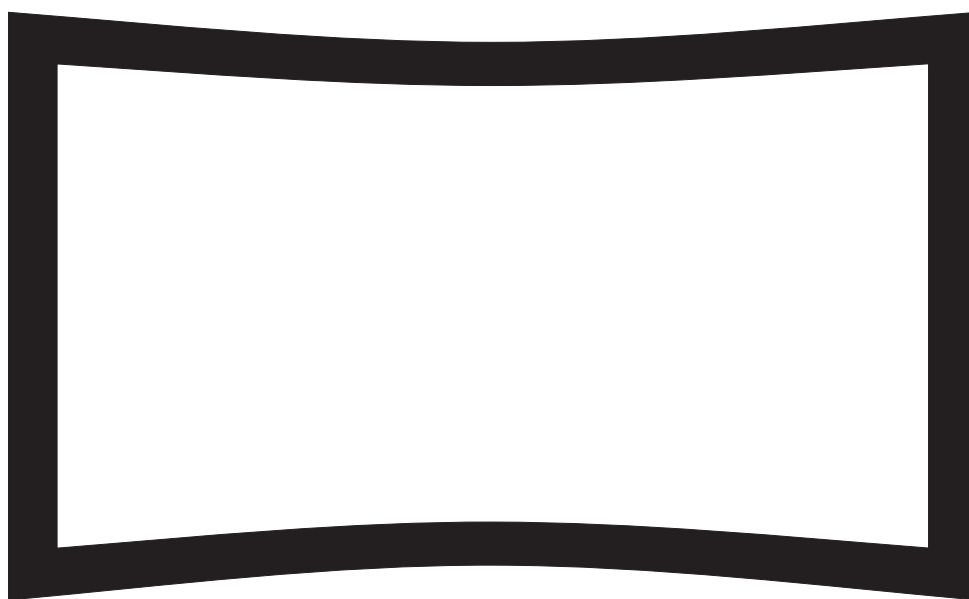


# **CURVED FIXED FRAME SCREEN**

## **USER MANUAL**



## CONTENT



Frame Assembly .....	03-04
Screen Assembly.....	05-06
Black Backing Assembly.....	07-09
Hang Up Fixed Frame Screen.....	10-11

### TO THE OWNER

Thank you for purchasing our Curved Fixed Frame screen. Please take a moment to carefully read this manual before assembly and install.

#### DIRECTIONS

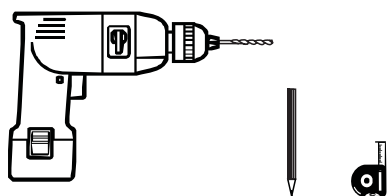
- 1). Starting assembly frame, please assembly center joint connector to horizontal curved frames firstly.
- 2). Attach the rest of the screen in the following order: Right side, top, then the bottom. Stretch the screen as necessary to remove any wrinkles.
- 3). It is strongly recommended that the screws be screwed into the wall studs where possible. If the wall studs cannot be used, wall anchors must be used.
- 4). Select a location that is not susceptible to moisture, dust and is away from high traffic locations.

#### SCREEN CARE

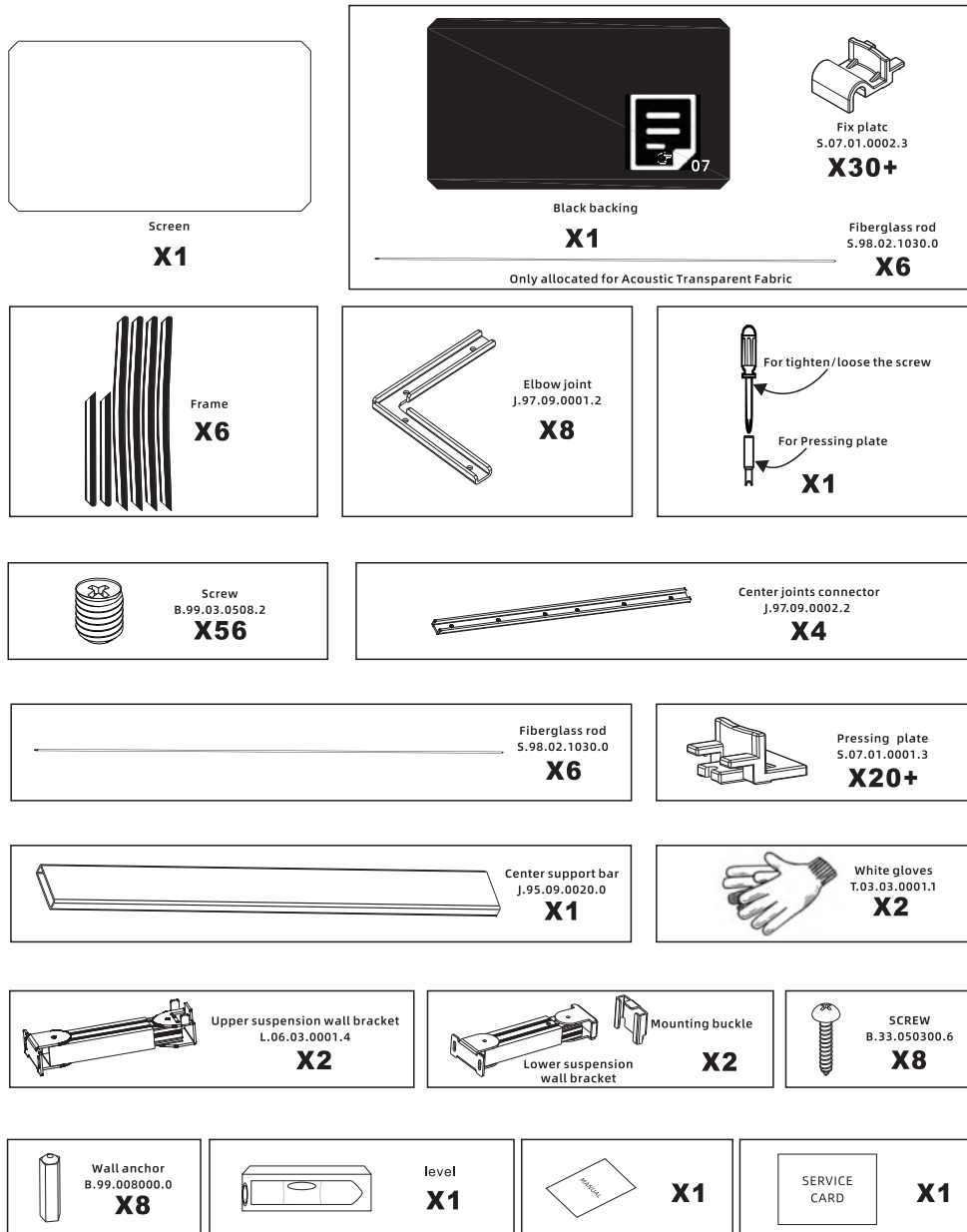
Wet cleaning: with a soft towel moistened with water or diluted detergent (Do not use alcohol)

**ATTENTION!! WHEN YOU SEE A  "WARNING!" BE SURE TO HEED THE MESSAGE!**

### Additional tools



## PARTS

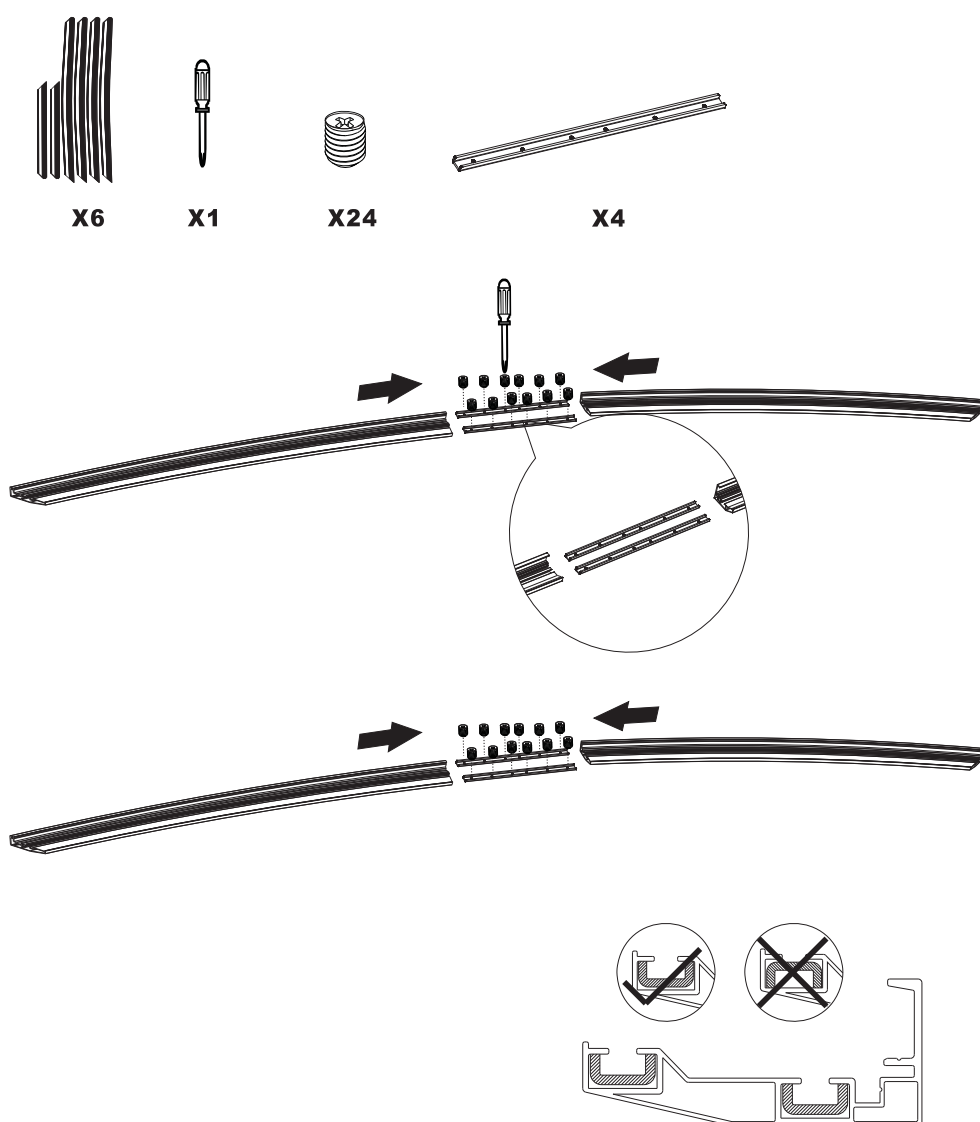


**⚠ Please make sure all parts are included in your package before proceeding to assemble fixed frame screen**

## FRAME ASSEMBLING

### Step 1

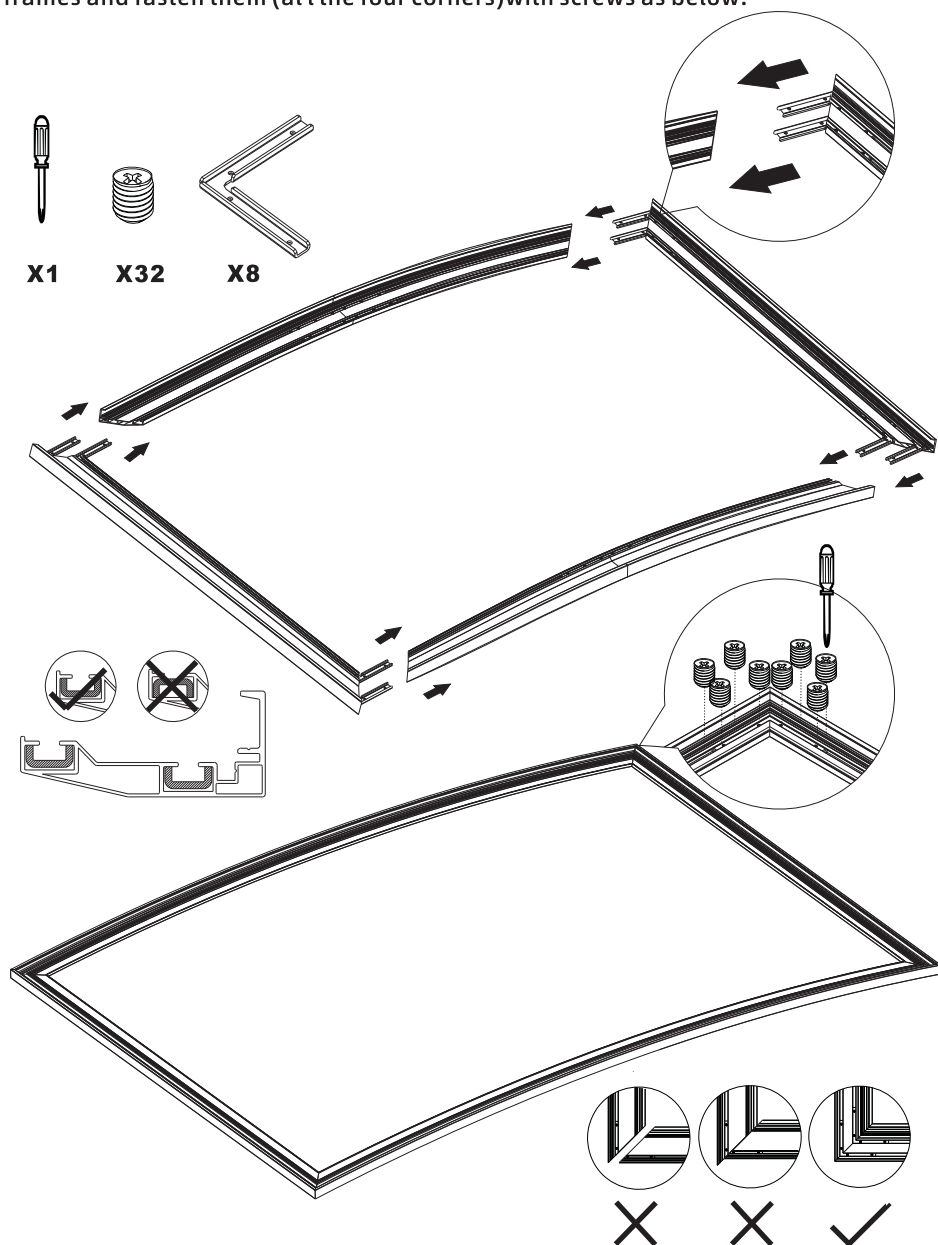
Insert the center joint connector into one of 1/2 horizontal curved frames, then insert the other 1/2 horizontal curved frame to the center joint connector and fasten it with screws.



**⚠ Please tighten the screw after make sure center joint connector orientation is correct**

## Step 2

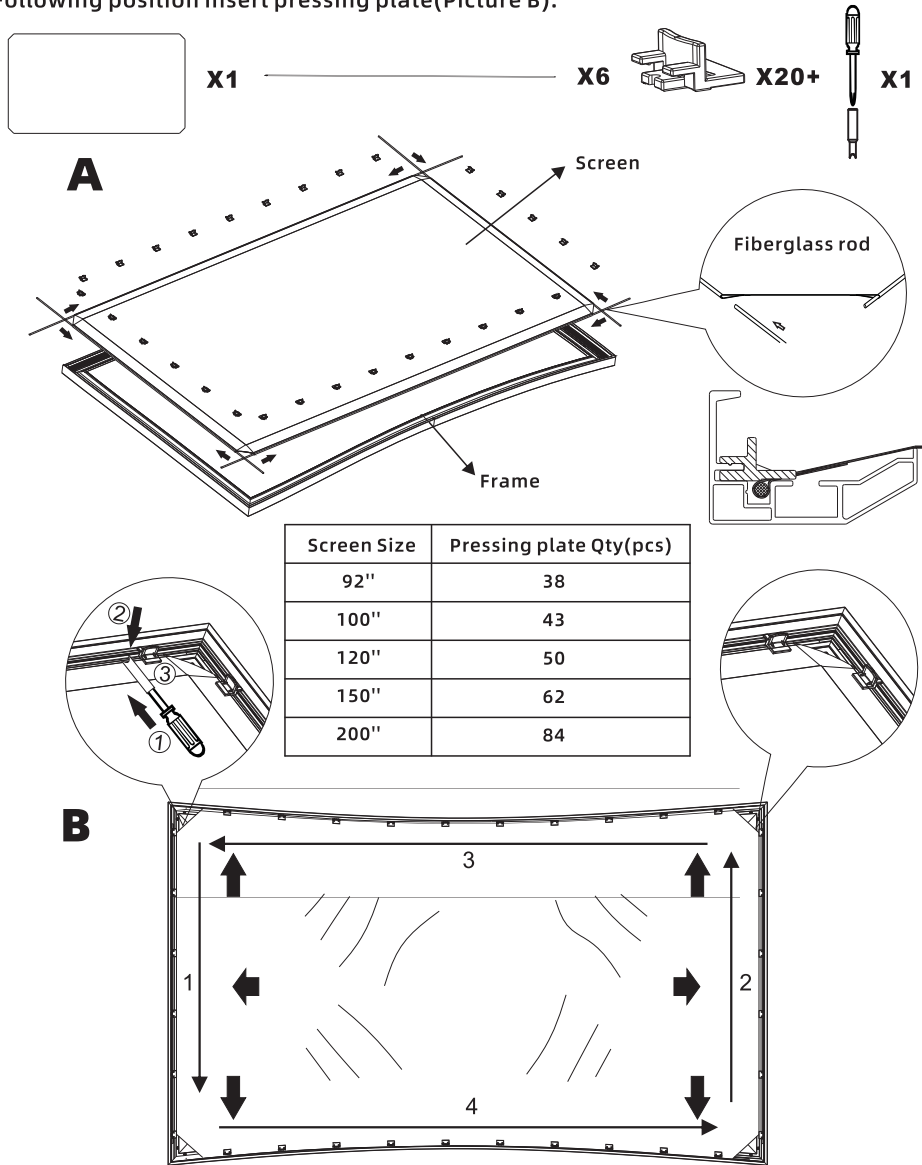
Insert the elbow joint into each of the vertical short frames, then insert the horizontal frames and fasten them (all the four corners) with screws as below.



## SCREEN ASSEMBLY

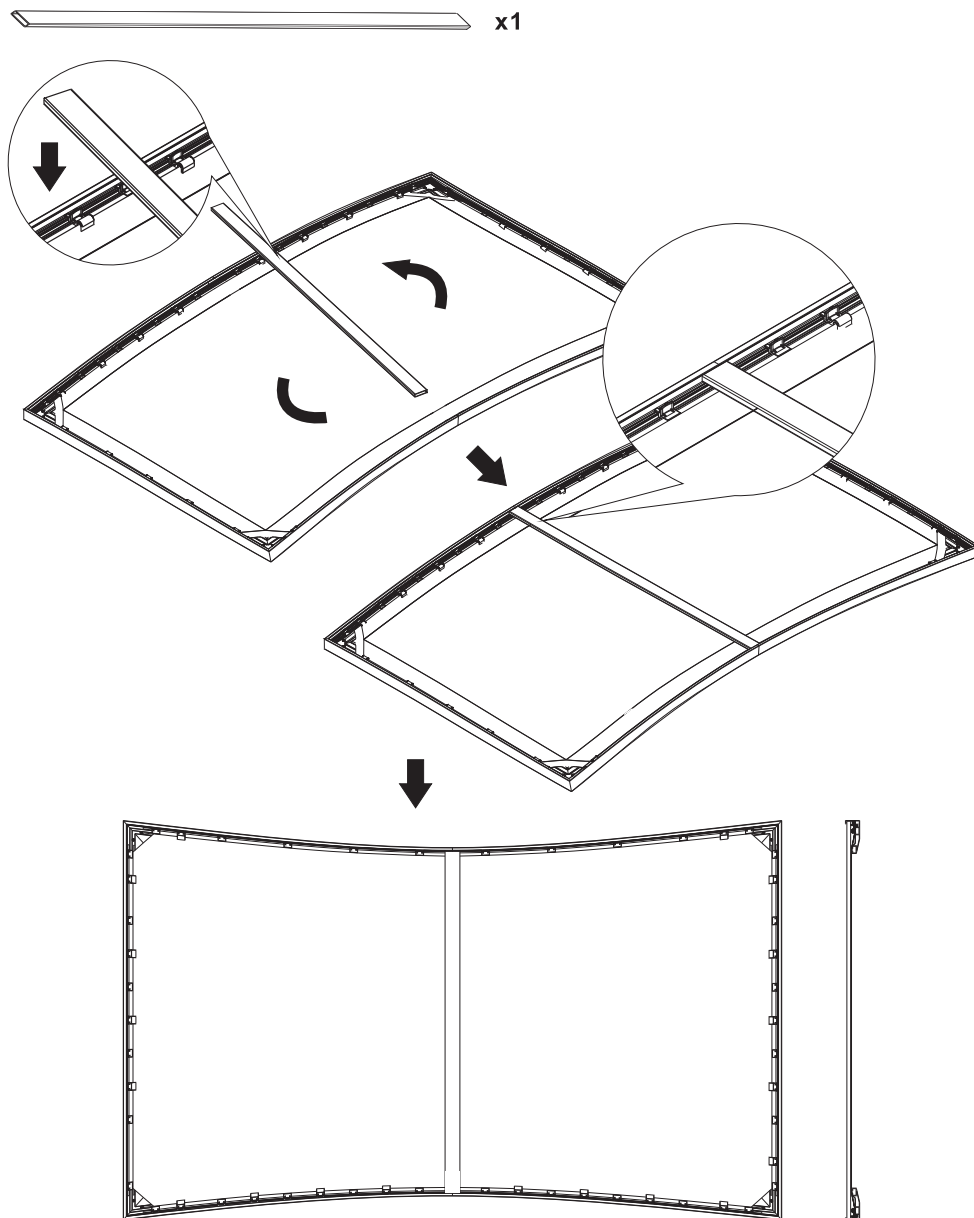
### Step 3

1. Insert the Fiberglass rod separately into the edges of all four corners of the material (Picture A).
2. Put the screen on the fabric for fabric tensioning. Stretch the Fiberglass rod in the direction of the arrowhead, then use pressing plate fix screen in each frame(1→2→3→4). Following position insert pressing plate(Picture B).



#### Step 4

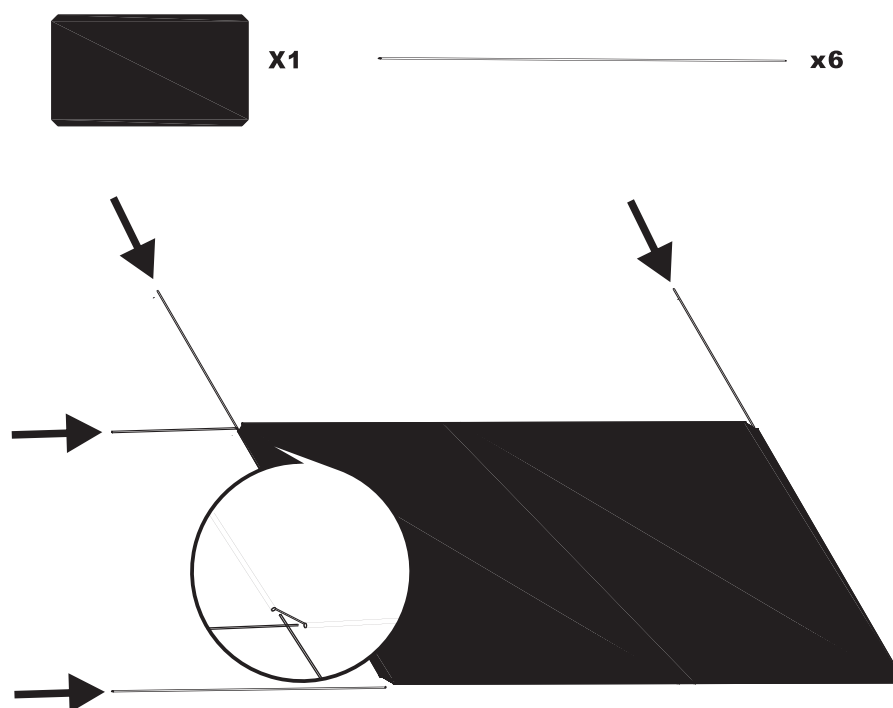
If black backing included, please assembly black backing first before assembly center support bar(Page 7). If not, directly assembly center support bar.



## BLACK BACKING ASSEMBLY

### Step 1

Insert the Fiberglass rod separately into the edges of all four corners of the black backing.





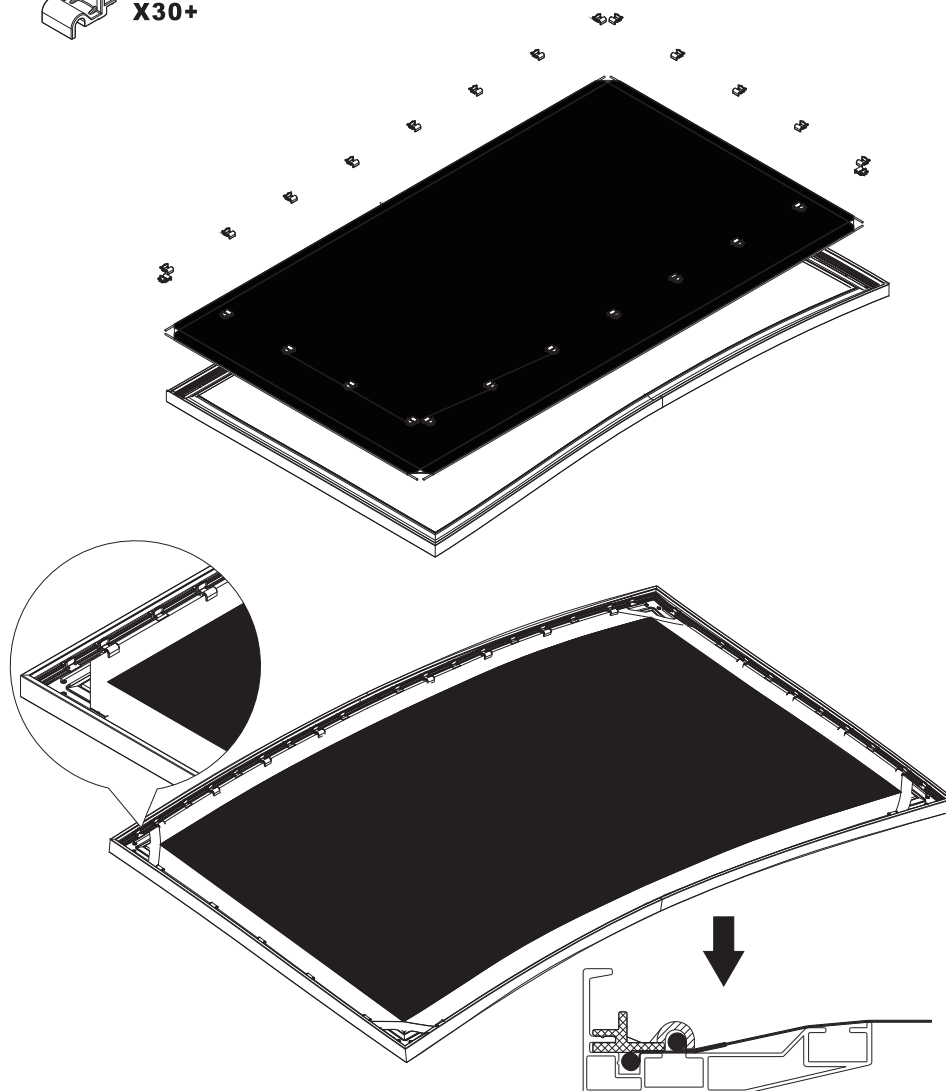
## Step 2

Stretch the Fiberglass rod in the direction of the arrowhead, then use pressing plate fix screen in each frame corner.

⚠ Please make sure pressing plate toward  orientation is correct .

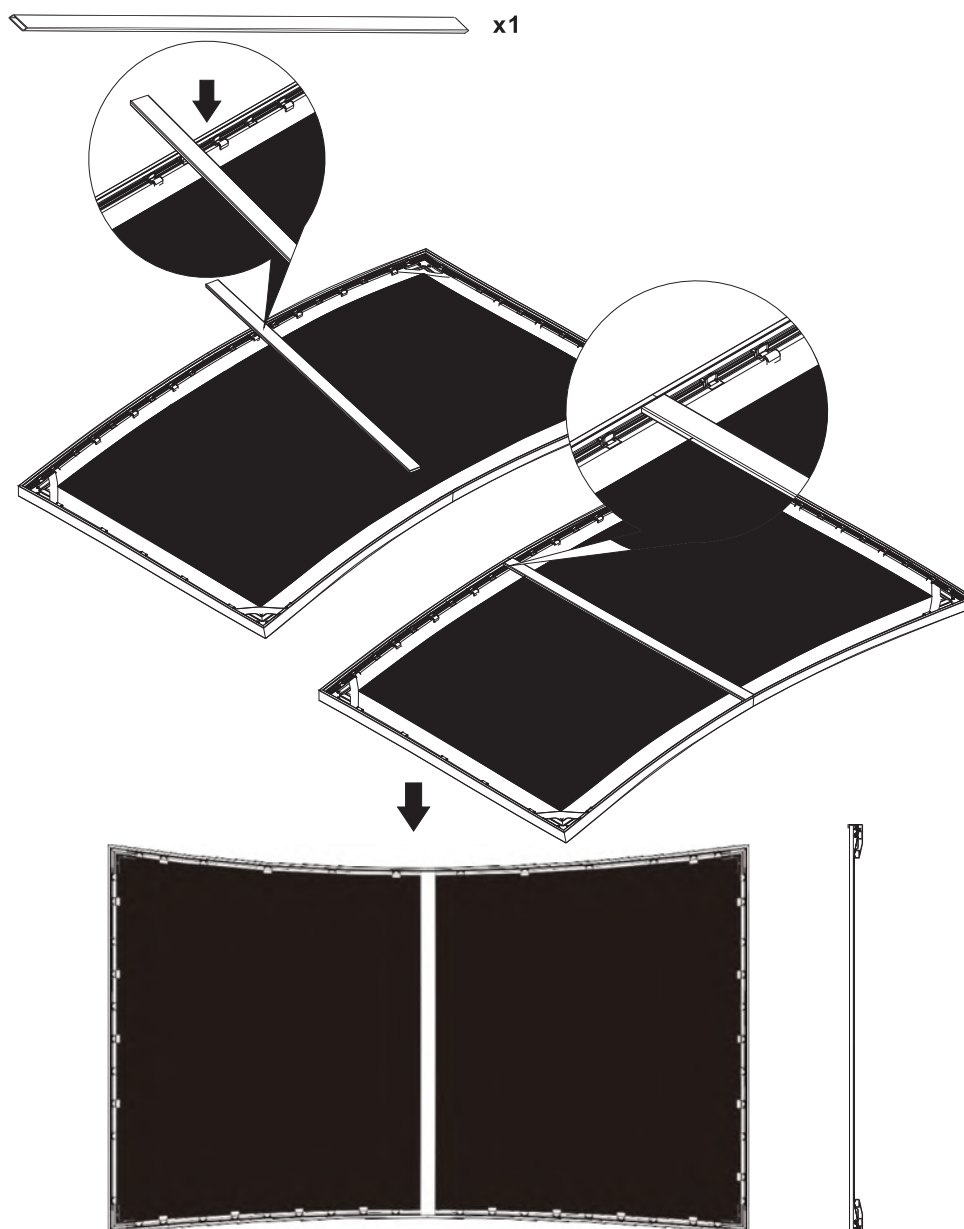


**X30+**



### Step 3

Insert the Center Support Bar into the upper top groove on the back of the frame (not the one where the fix pressing plate) with the bottom end near the approximate center point of the frame, instruction as below.

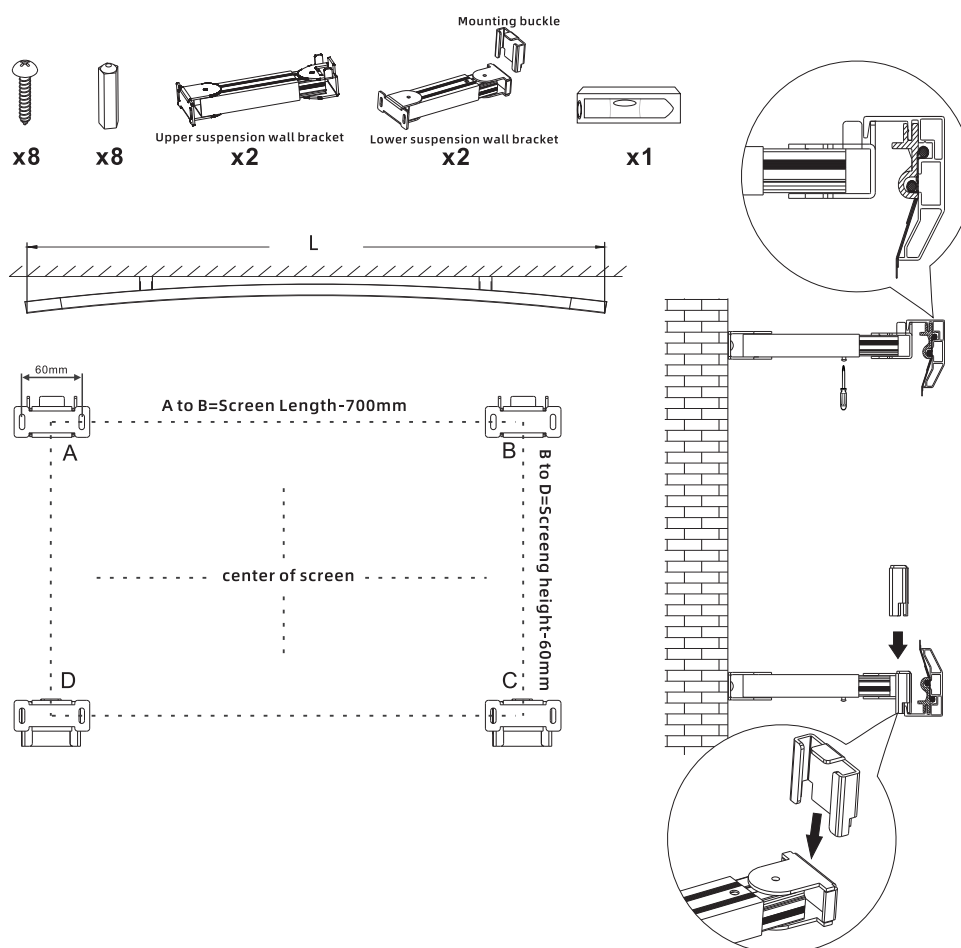


## Mounting On the Wall

### Step4

1. Mount the Upper /Lower Wall Brackets(mind the difference between the upper and lower suspension wall bracket) in the desired location (NOTE: use the formula to calculate the bracket distance before drilling). They must be installed level.
  2. Lift the assembled screen up and over the upper wall brackets, the screen will align with the channel in the frame. Push the mounting buckle into the track between bottom frame section and the lower wall brackets.
  3. Carefully adjust and swing the screen to the right position, tighten the brackets screw. Center screen horizontally on brackets as necessary.
- Please Note: Make sure the screen is installed level.

When lifting the screen, do not lift at only one corner; lift at both corners. Lifting by one corner could result in damage to the screen frame, especially on large screens.



### Step5

After finish hang up fixed frame screen, put bubble leveler on the top frame. If bubble in the middle, means fixed frame screen is flatten. If not, adjust the fixed frame screen unti bubble in the middle.

