



QUICK FOLD SCREEN USER MANUAL

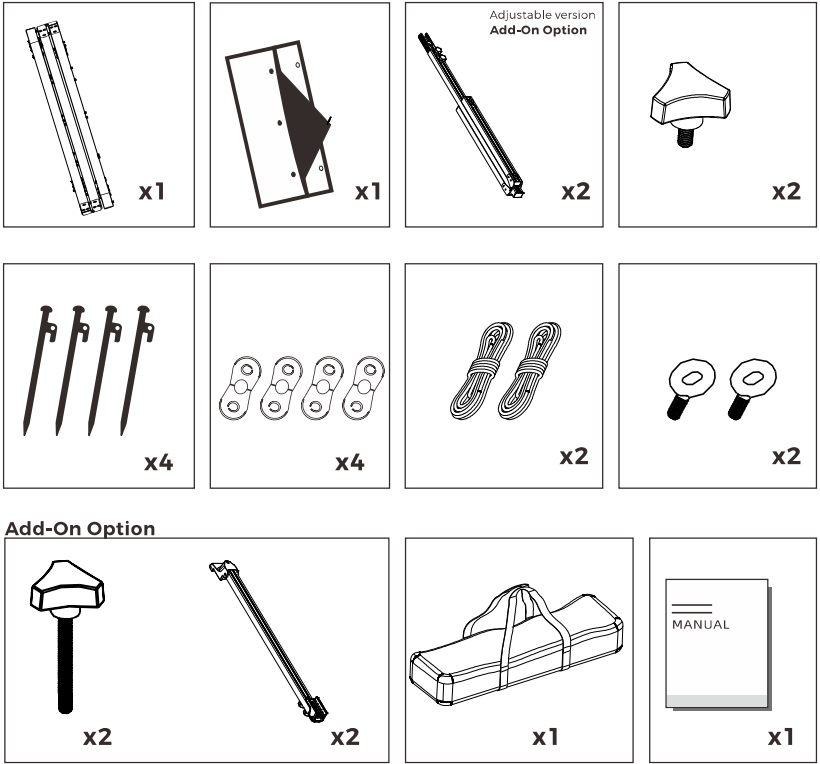


TO THE OWNER
Thank you for purchasing our quick fold screen. This product is comprised of durable matte white fabric and mechanical components to give you trouble free enjoyment for years. Please take a moment to read this user guide before assembly or installation.

The projection surface has to be folded with the front layer inside, in order to avoid damage.

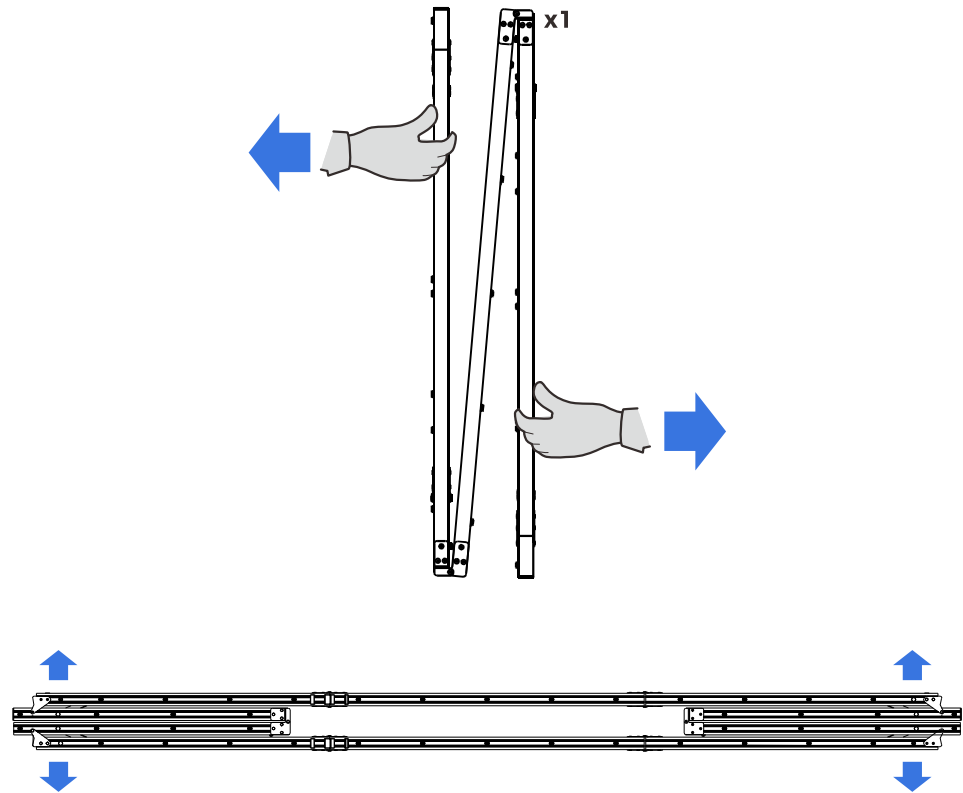
NOTE: Please storage the screen fabric into the separate soft pouch to avoid any damage, failure to observe those normal precautions may cause discolorations of the material.

PARTS

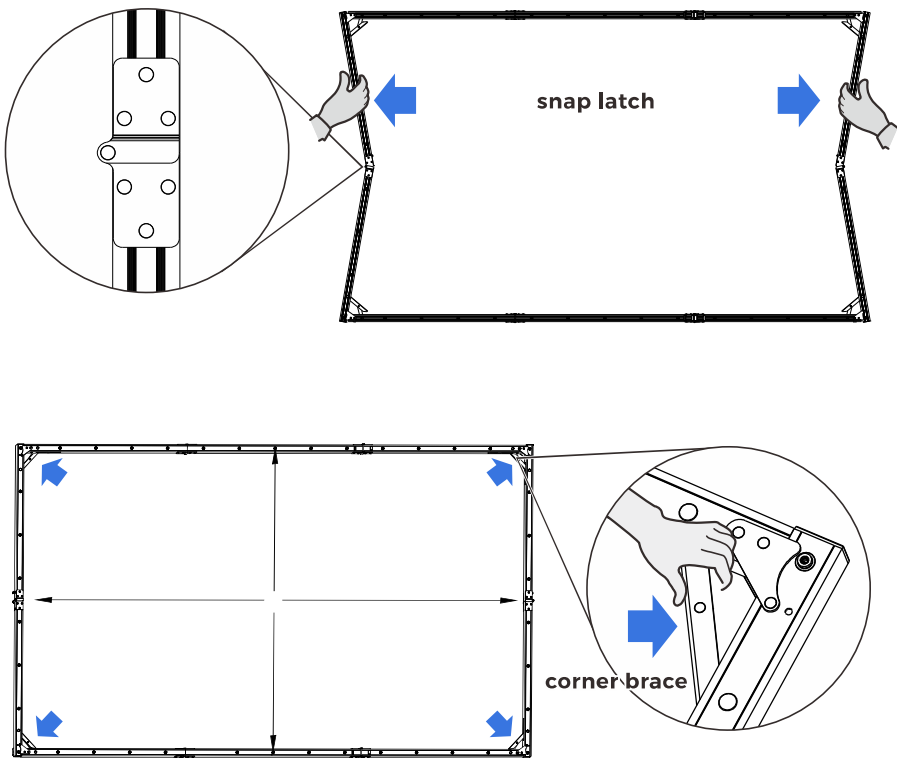


Please make sure all parts are included in your package before proceeding to assemble quick fold screen.

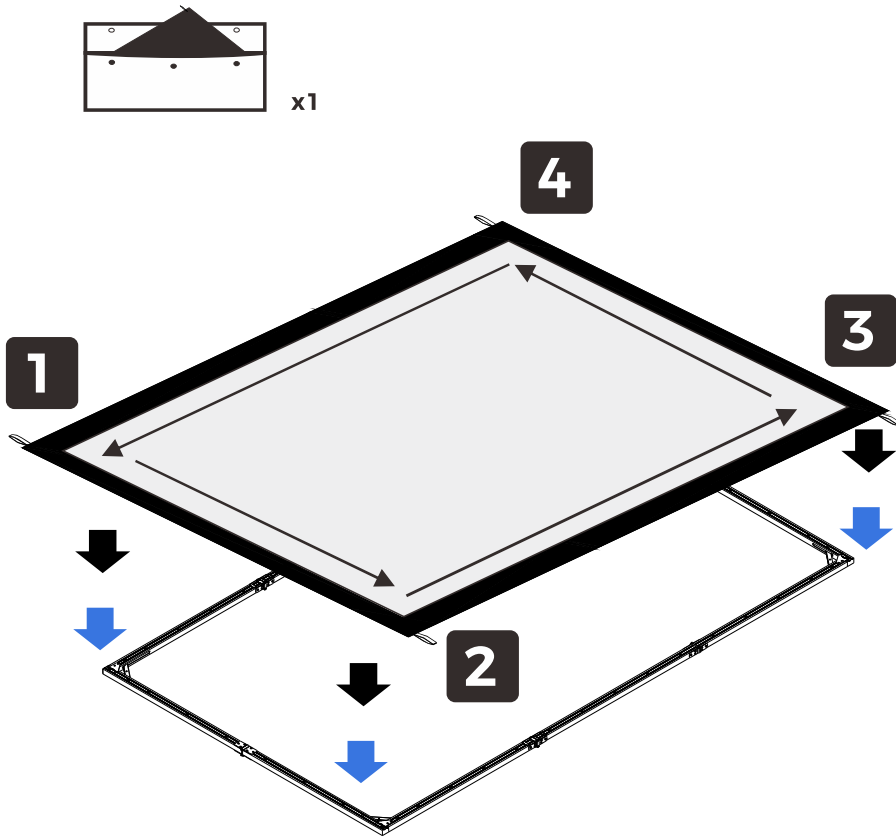
1 Unfold the frame



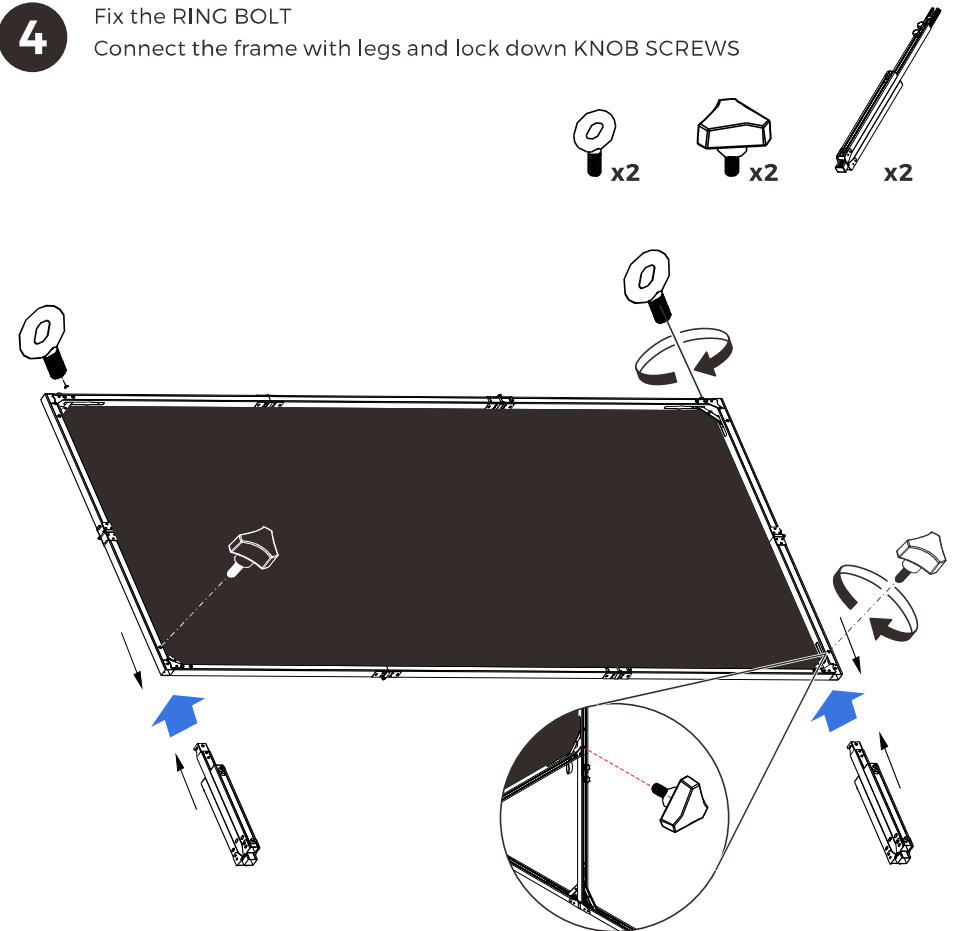
2 Lock down all four corner braces.



3 Lay out the screen on the frame. Press on the projection surface. Ensure there is no peaked and hard object under the fabric.

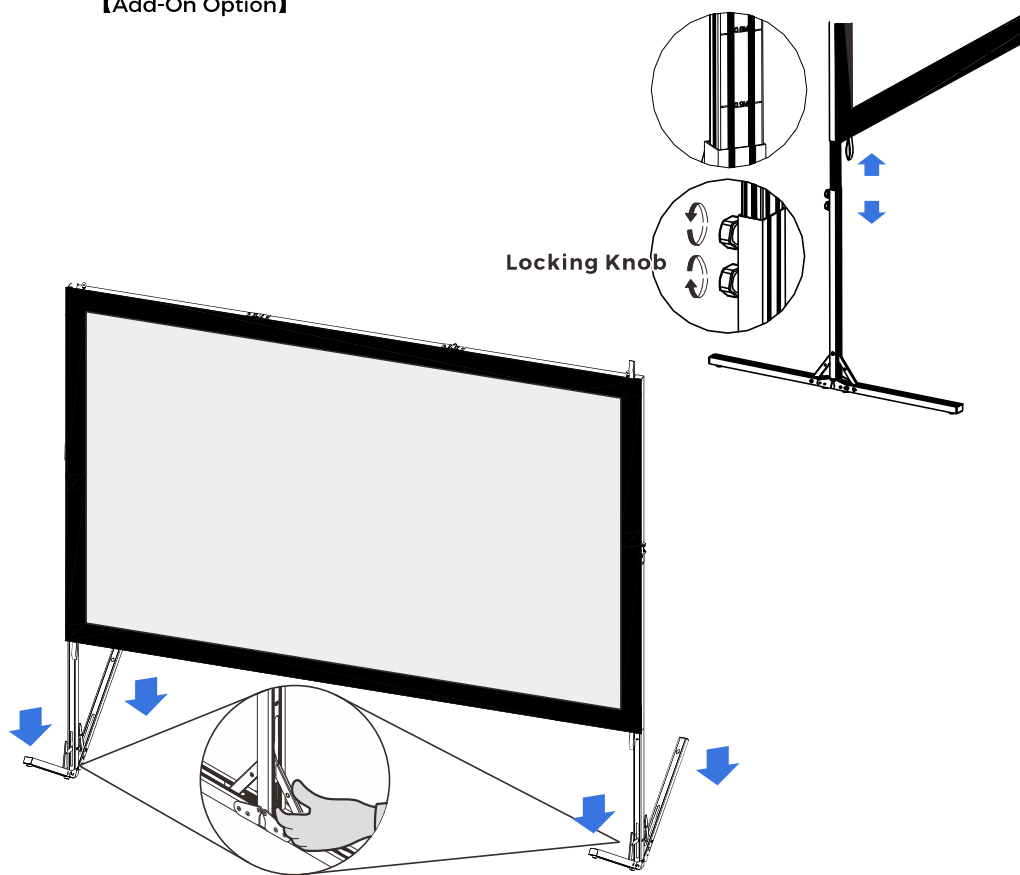


4 Fix the RING BOLT. Connect the frame with legs and lock down KNOB SCREWS



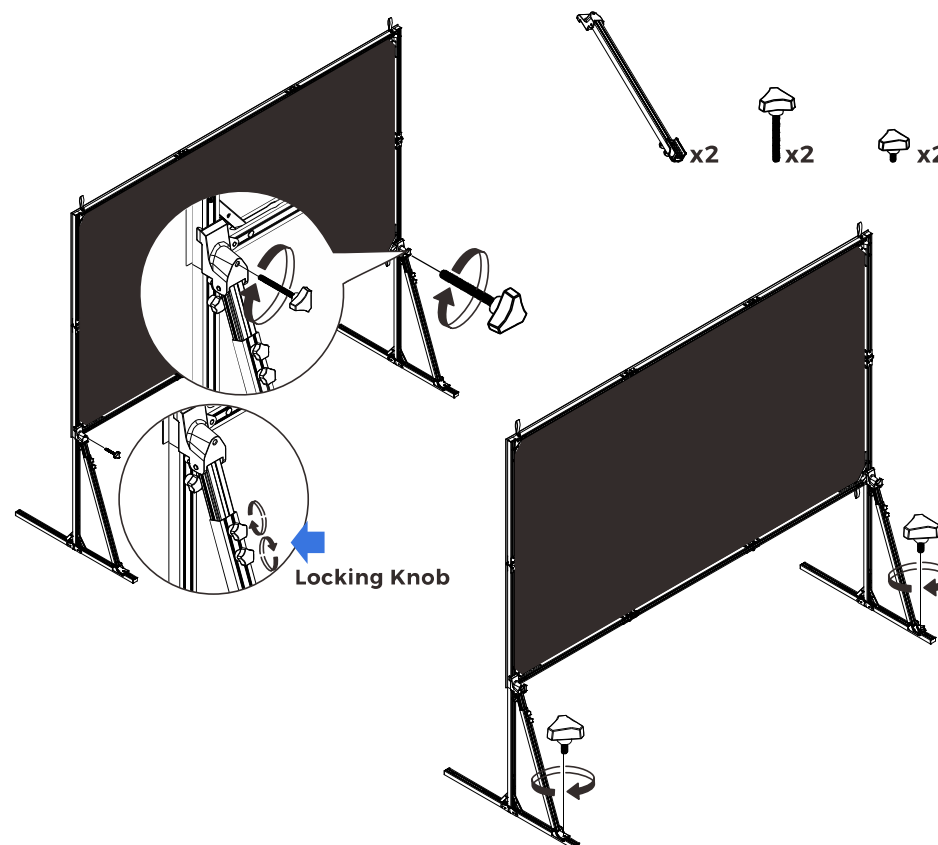
5

Lift the screen up.
Adjust the height to an ideal positions then tighten the LOCKING KNOBS.
【Add-On Option】



6

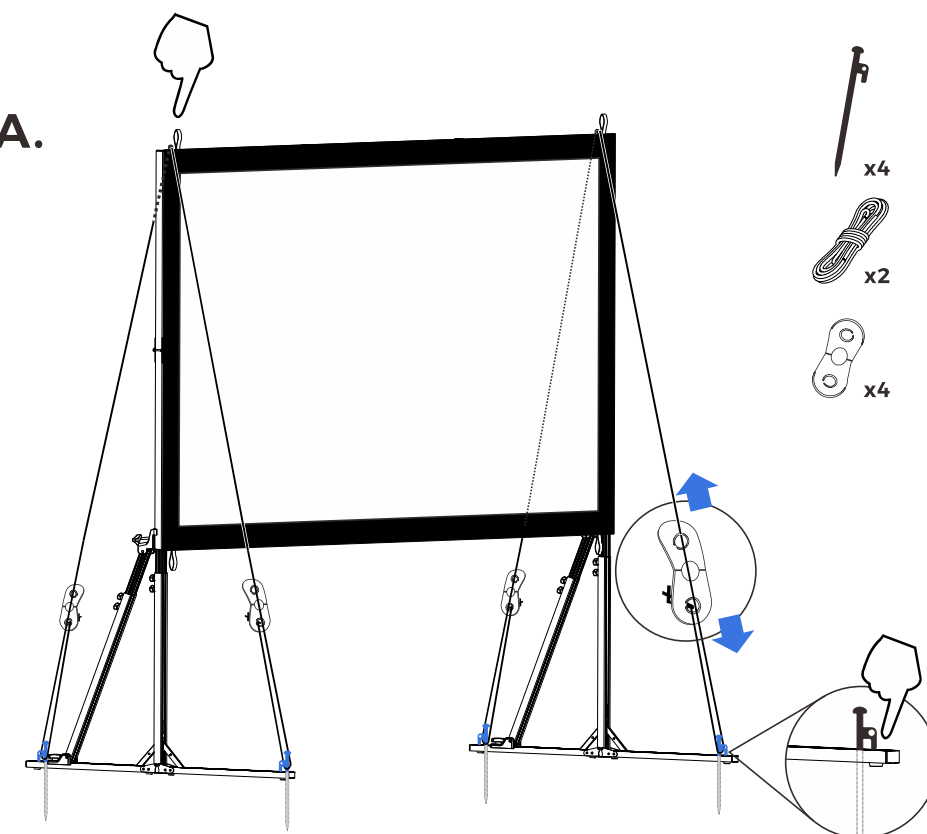
Add-On Option
Attach the support brace from the back with the LEG KNOB SCREW.
Loosen the locking knobs on the support brace before adjust the length to position.



7

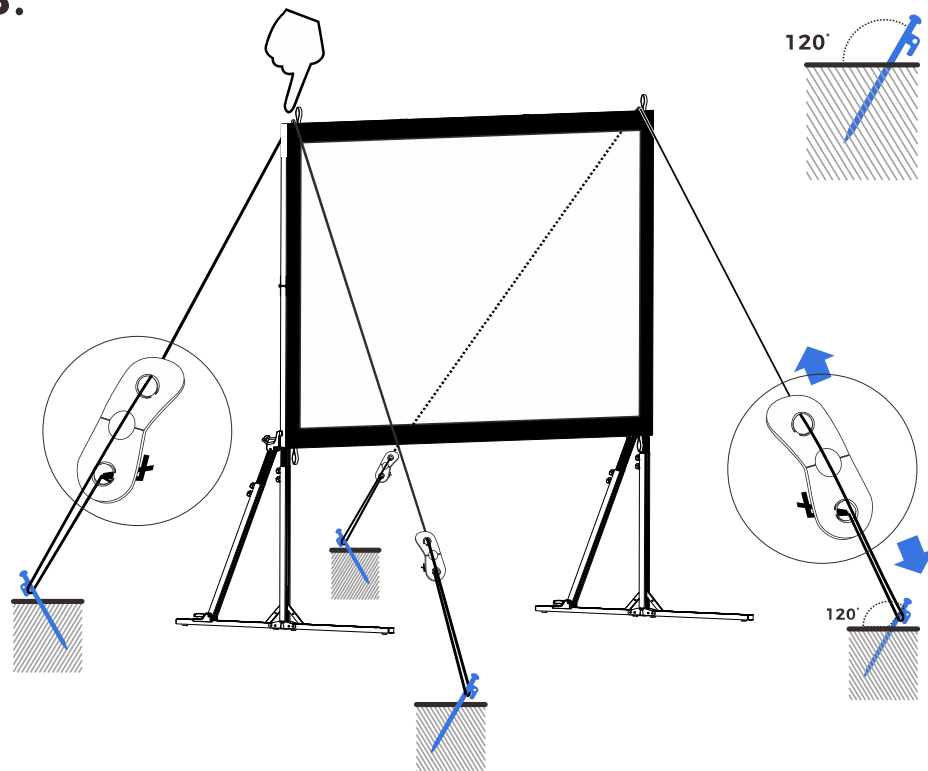
Insert the ground stakes to enhance the stability of screen.

A.



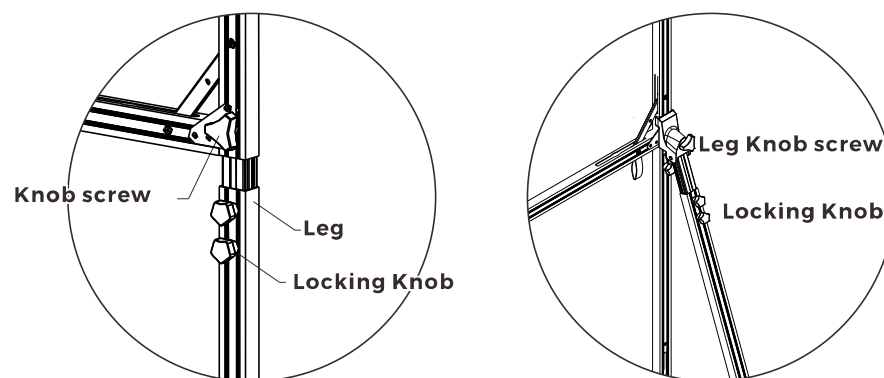
Be sure to use the screen only during a light breeze(up to 7mph);
it's not mean to withstand heavy winds.

B.

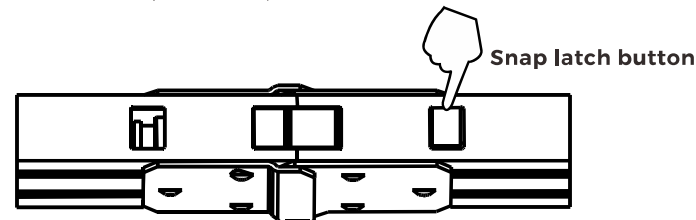


Add-On Option BREAK DOWN

1. Unlock the joints and leg supports, lay frame flat on an even surface.
2. Remove fabric
3. Unscrew knobs and remove leg pieces.



4. To break down the screen frame, unlock all four corner braces. Push the SNAP LATCH button(see below)and fold the frame.



FOLDING THE FABRIC FOR STORING

when folding the screen material for packing, observe the following precautions before proceeding:

1. The surface should not be allowed to contact painted, varnished or plastic finished objects for prolonged period of time.
2. Make certain the fabric is on a clean flat surface.
3. Fold material from left to right and continue folding until the fabric of sufficient size to fit into the leather pouch.
4. With the viewing side facing up, fold the fabric in half from top to bottom. Make certain when folding that the surface does not come in contact with either the black binding, grommets or snap buttons.

*Place clean white tissue paper with no printing on top of the white viewing surface area. If tissue is not available, a soft white cloth or something similar will serve the same purpose. under no circumstances should newspaper or anything similar be used as these may damage the screen material.

SURFACE CAN BE CLEANED AS FOLLOWS:



1. Using a white clean cloth(100% cotton preferred) that is dampened with clear water, gently wipe the area in one direction. Do not use a circulate motion. Using a fry 100%cotton cloth ,wipe dry after each cleaning and before folding and storing.
2. To clean a stubborn stain or sticky surface, use denatured alcohol(methanol or methyl alcohol) following he same procedure as for water.